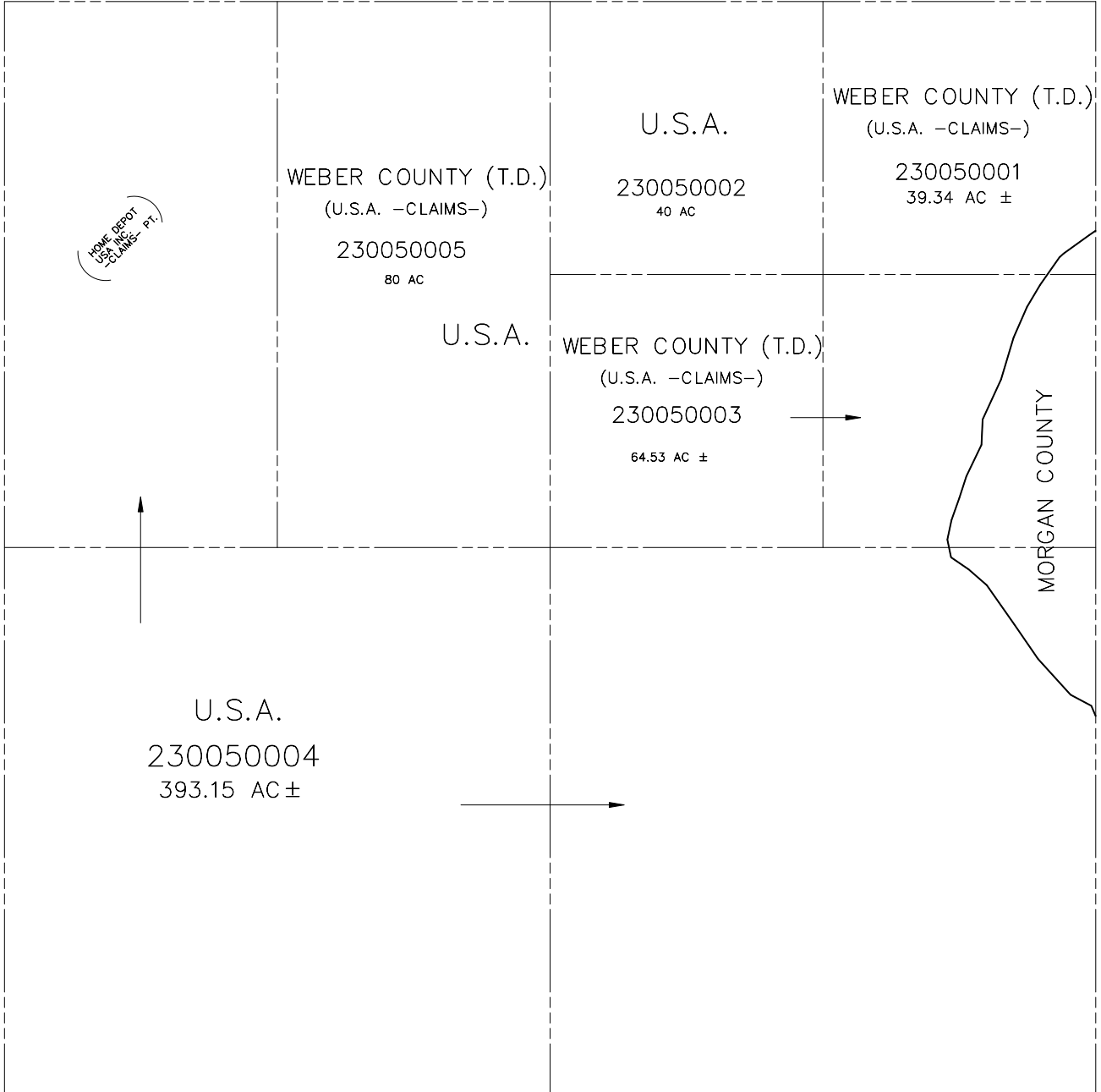


SECTION 18, T.5N., R.1E., S.L.B. & M.

IN WEBER COUNTY  
SCALE 1" = 400'

TAXING UNIT: 58

SEE PAGE 1



SEE BOOK 6, P. 120

SEE PAGE 1

SEE PAGE 1

NOTE: WEBER/MORGAN ASSESSMENT LINE  
CHANGED TO COUNTY LINE - 1998